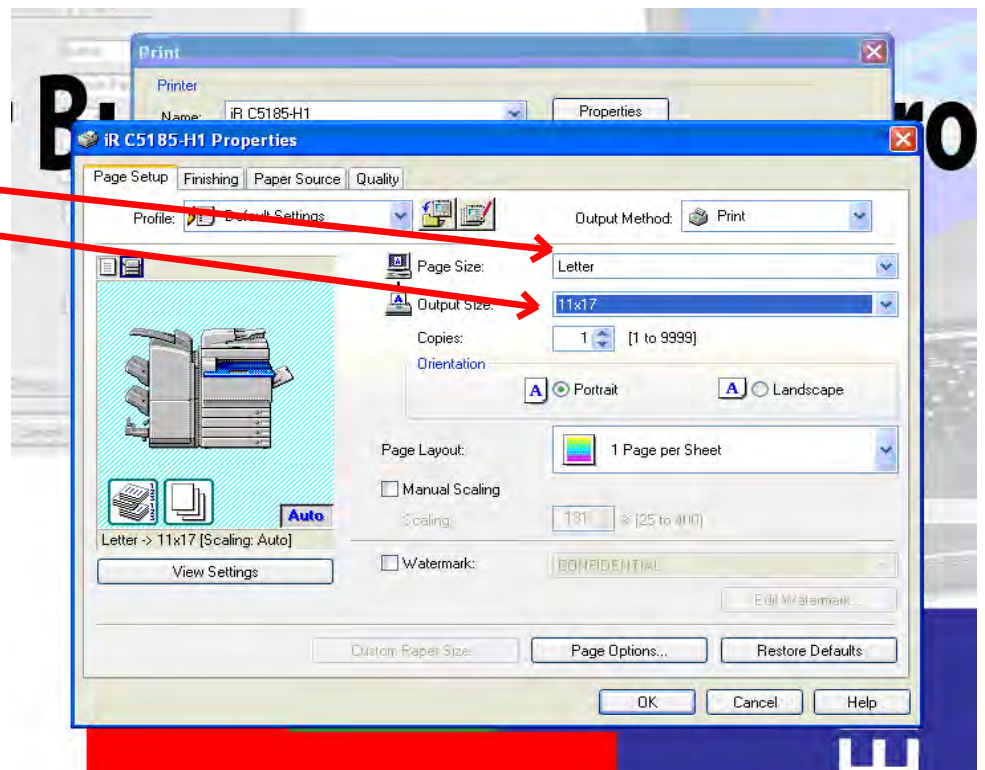


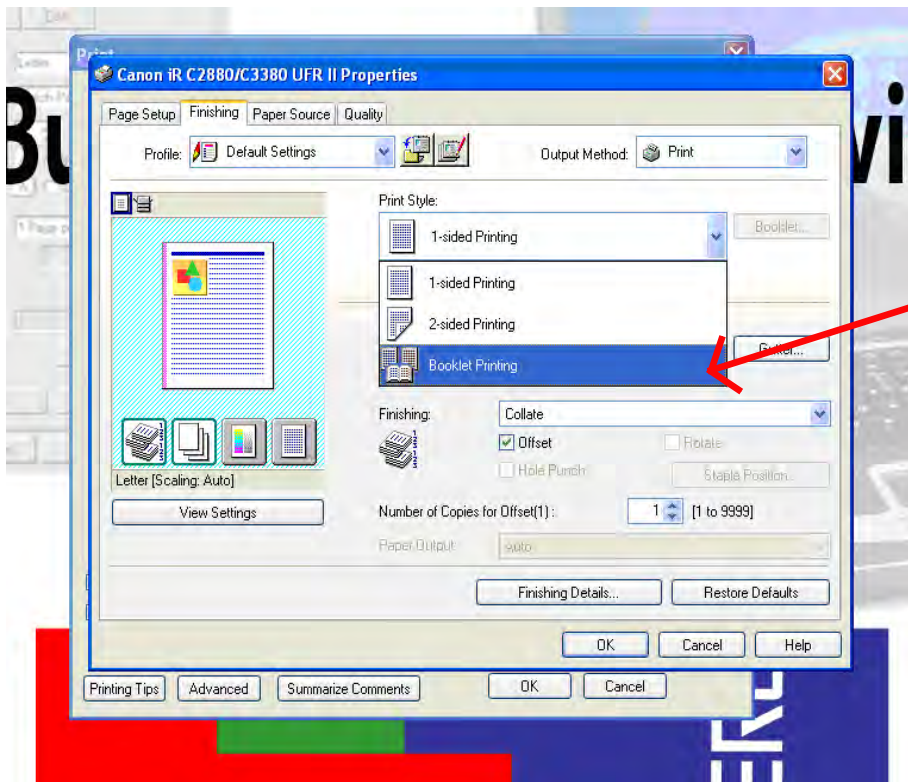
Quick Fix Tip: Full Size Booklet with a PCL Driver



1. After choosing the correct copier hit the "Properties" Button

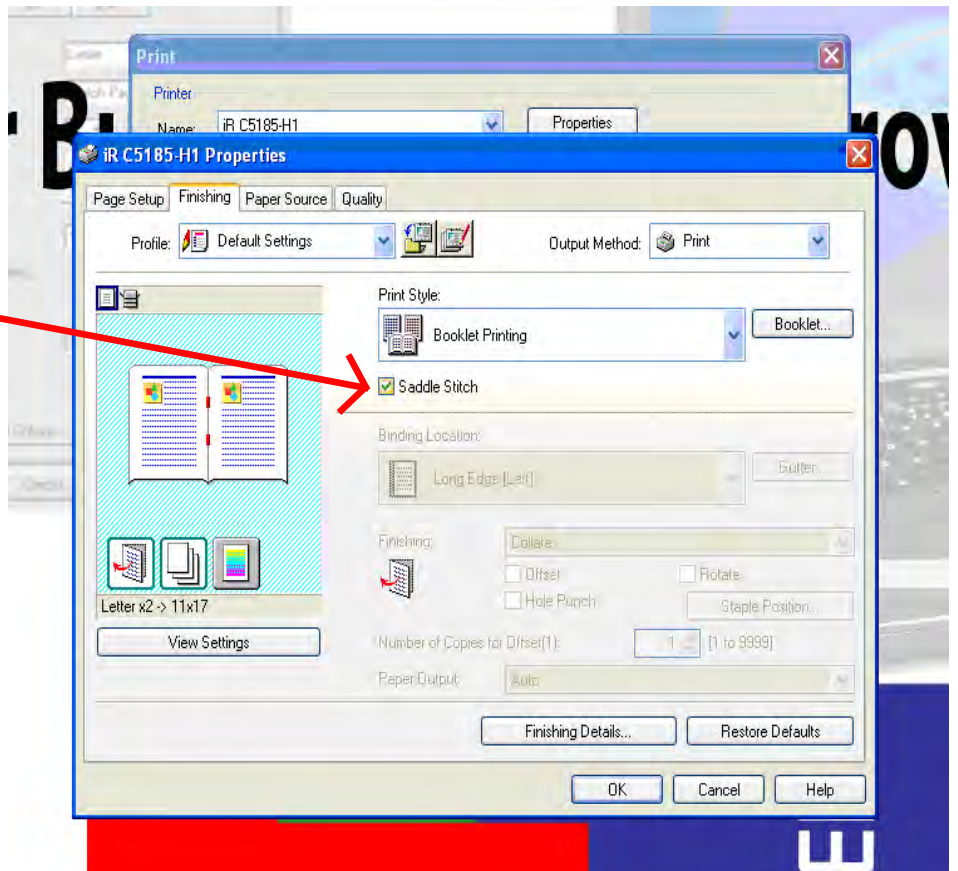


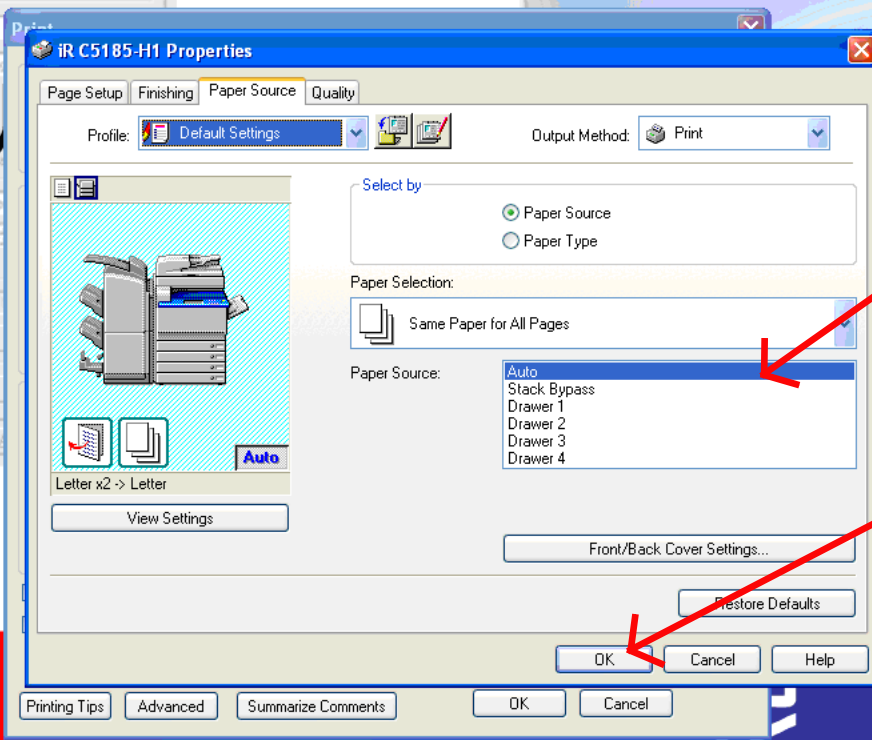
2. Make sure your page size is "Letter" and your output size is "11 x 17"



3. Click the Finishing Tab, and then under Print Style choose "Booklet Printing".

4. Click the Saddle Stitch button.

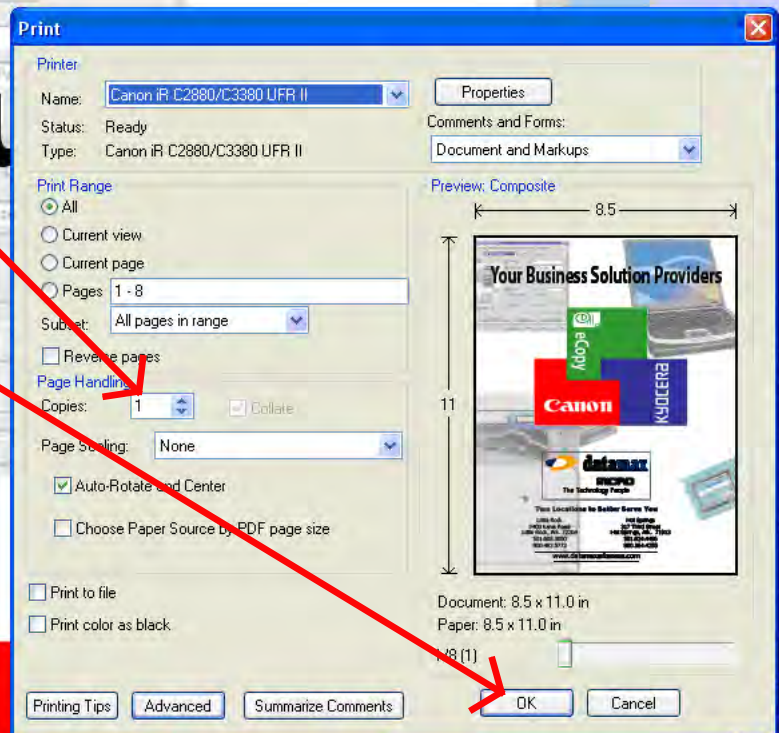




5. Click the Paper Source Tab, and then under Paper Source choose "Auto".

6. Click "OK".

7. Put how many copies you want and click "OK".



Another Quick Fix Tip Brought To You By