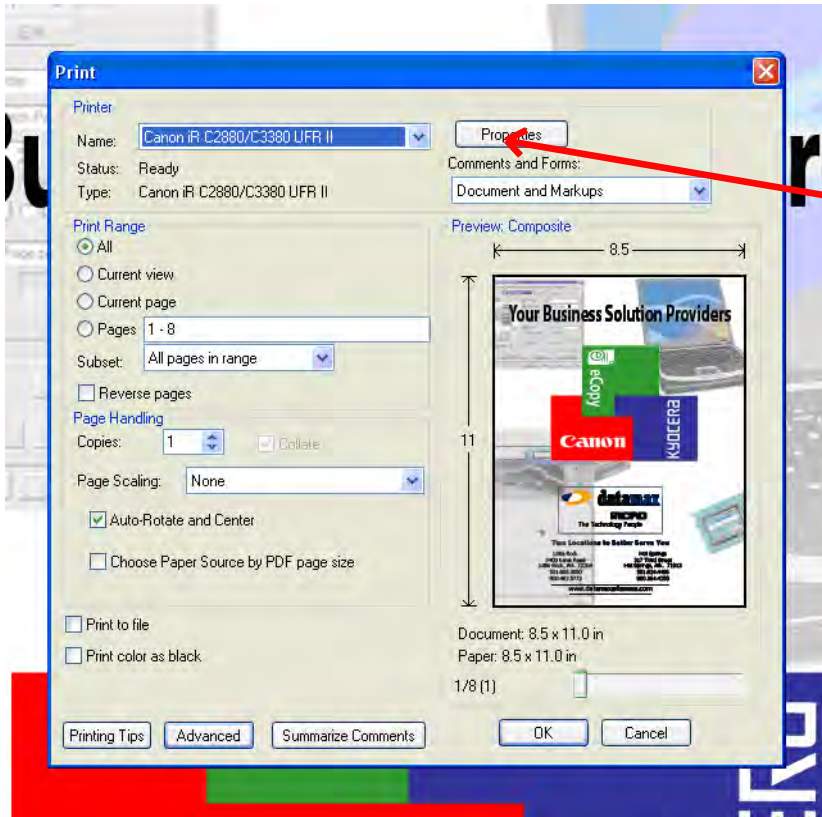


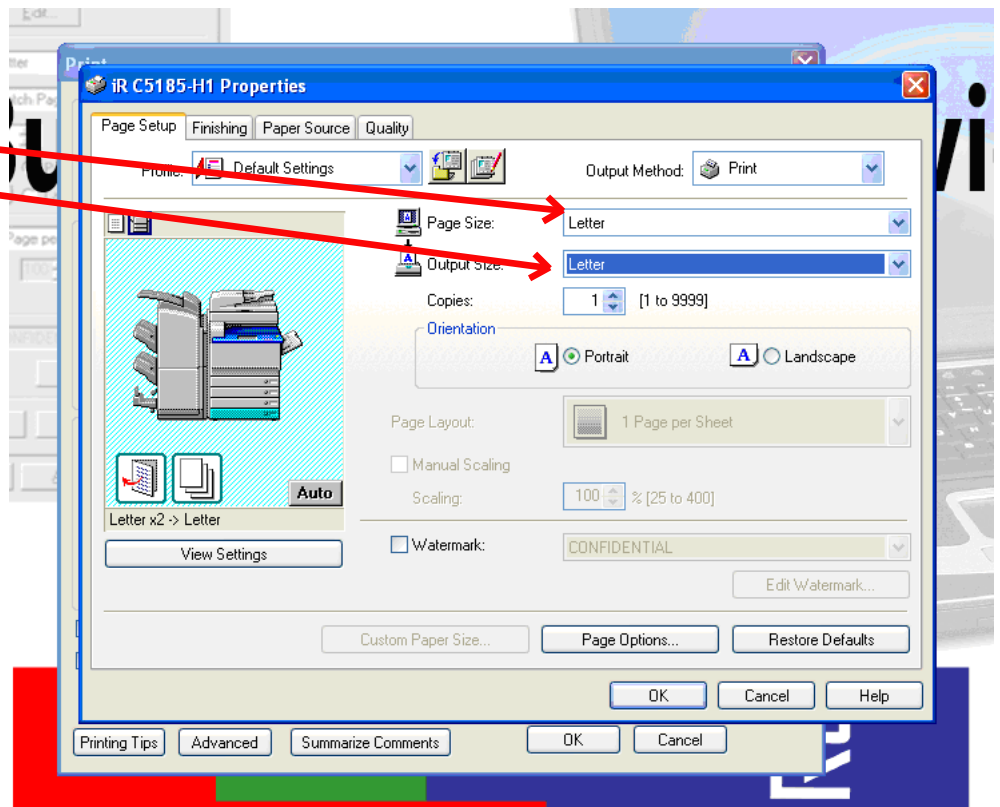
# Quick Fix Tip: Small Size Booklet with a PCL Driver

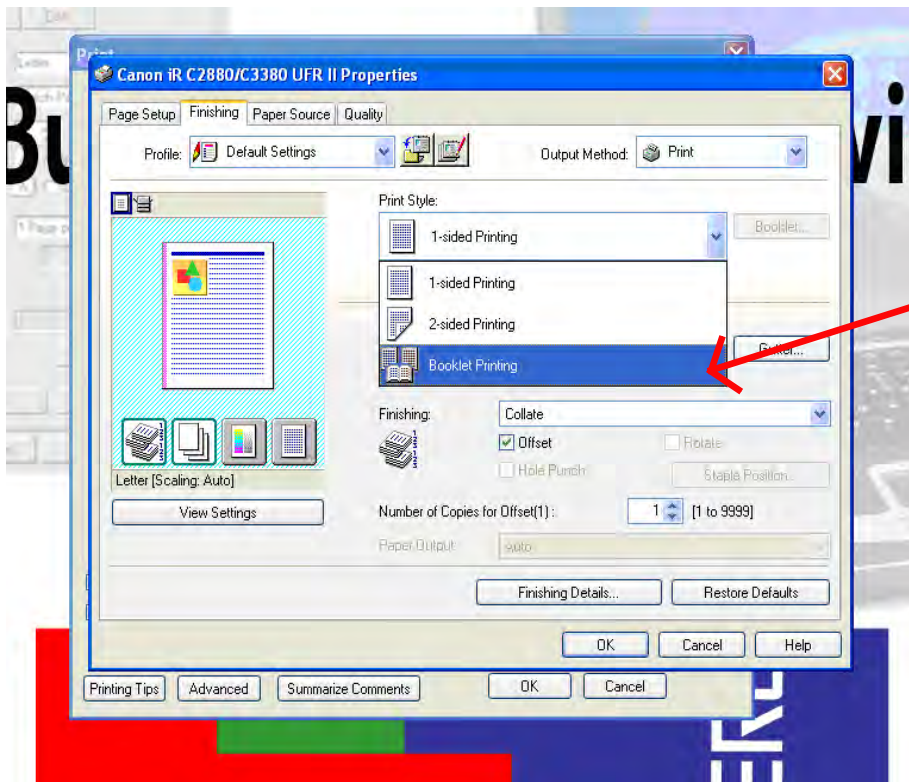


1. After choosing the correct copier hit the "Properties" Button

NOTE: You MUST have Letter "R" loaded in order to print Small Booklets!

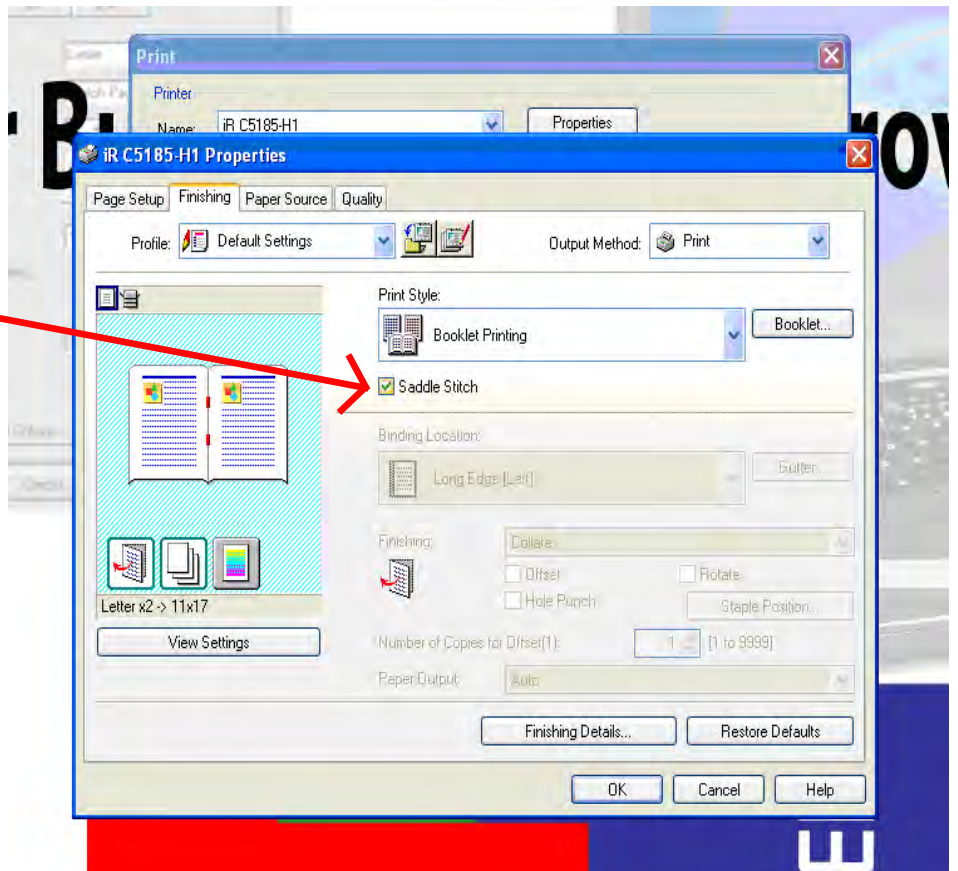
2. Make sure your page size is "Letter" and your output size is "Letter"

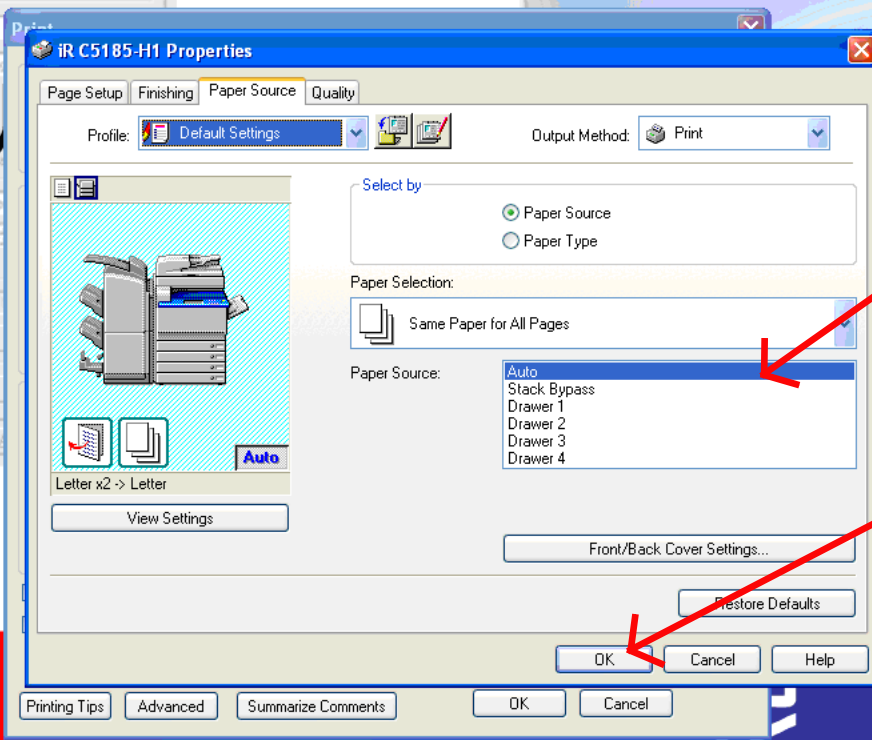




3. Click the Finishing Tab, and then under Print Style choose "Booklet Printing".

4. Click the Saddle Stitch button.

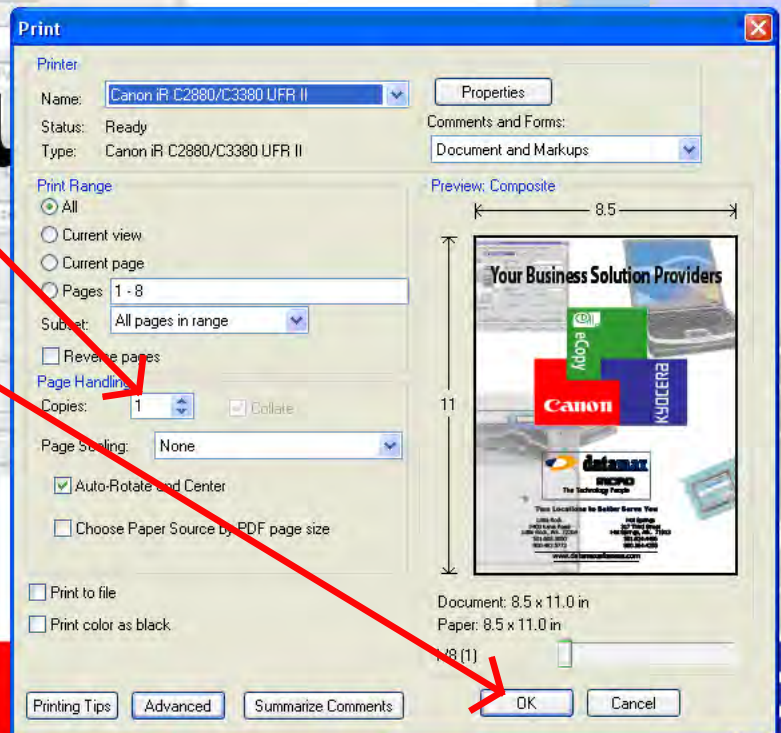




5. Click the Paper Source Tab, and then under Paper Source choose "Auto".

6. Click "OK".

7. Put how many copies you want and click "OK".



Another Quick Fix Tip Brought To You By